

- Certifications**
- Conforms to ANSI/BHMA A156.4, Grade 1
 - cULus listed
 - ADA compliant, barrier free
 - 10 Year limited warranty

- Power Size**
- Adjustable size 1-6 (preset 3)
- See selection guide for details*

- Body Material**
- Cast aluminum body, painted finish

- Mechanism**
- Hydraulic rack and pinion operation

- Fluid**
- Non-gumming, non-freezing hydraulic fluid

- Adjustments**
- Sweep speed adjustment valve
 - Latching speed adjustment valve
 - Cushioning backcheck adjustment valve

- Cover**
- Full body plastic cover, painted finish

- Handing**
- Non-handed

- Opening**
- 120° maximum
 - 180° maximum with parallel arm

- Mounting**
- Tri-Pack: regular¹, top jamb¹, parallel arm²
 - Drop plates – available

*(1) Arm allows 15% power adjustment
(2) May reduce spring power efficiency by 25%*

- Hardware**
- Wood screws & self-tapping machine screws
 - Sex nuts & thru-bolts – available, sold separately

- Available Arms**
- Regular arm
 - Extra duty parallel arm
 - Friction hold open arm
 - Heavy duty cushion stop arm, hold open
 - Heavy duty cushion stop arm, no hold open
 - Arm extension rod





- Finish**
- AL–Aluminum, painted; DU–Dark bronze, painted
- Other finishes available by special order*

4000	CNS	–	AL
MODEL	ARM		FINISH

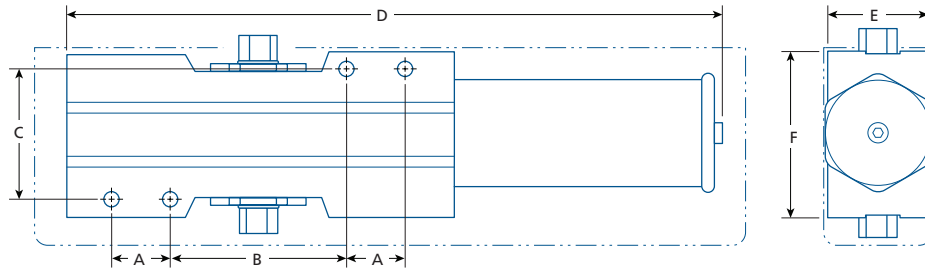
SEE SELECTION GUIDE FOR DETAILS



SELECTION GUIDE

MODEL		POWER SIZE	WEIGHT CAPACITY ¹	MAX. DOOR WIDTH ²		BACKCHECK	DELAYED ACTION	FINISH	/CASE
				INTERIOR	EXTERIOR				
4000 REGULAR ARM		1–6	330 (150)	60 (1524)	48 (1219)	■	—	AL, DU	6
4000 EA EXTENDED FOREARM								AL	6
4000 CNS CUSHION-STOP ARM, NO HOLD OPEN		1–6	330 (150)	60 (1524)	48 (1219)	■	—	AL	4
4000 HC CUSHION-STOP ARM, HOLD OPEN*								AL	4

CAUTION: ANY DOOR CLOSER INSTALLED AND ADJUSTED BASED ON ADA REDUCED FORCE REQUIREMENTS MAY NOT RELIABLY CLOSE AND LATCH DOOR.
(1) WEIGHT CAPACITY IN POUNDS (KILOGRAMS) (2) MAXIMUM DOOR WIDTH IN INCHES (MILLIMETRES) (*) NOT FOR USE ON FIRE RATED DOORS



MODEL	A	B	C	D	E	F
4000	1 (25)	3 (76)	2¼ (57)	11¼ (285)	1½ (38)	2¾ (70)
4000 with cover	1 (25)	3 (76)	2¼ (57)	12¼ (310)	2½ (64)	3½ (89)

IN (MM)

PARTS & ACCESSORIES



4000-ARM
Regular arm.
Included with 4000.



4000-CSA
Heavy duty cushion stop arm, hold open.
Included with 4000HC.



4000-CSANHO
Heavy duty cushion stop arm, no hold open.
Included with 4000CNS.



4000-3049
Adjustable friction hold open arm, for standard or top jamb installation with reveal up to 3¾" (95 mm).



4000-3049P
Same as 4000-3049, with parallel arm bracket.



4000-3077EDA
Parallel arm for extra-duty applications



4000-LR
Long forearm link for reveal up to 5" (127 mm).
Included with 4000EA.



4000-18
For regular installations where the door top rail height is insufficient for direct mounting.



4000-18G
Narrow plate for top jamb installations where low ceiling prevents mounting.



4000-18PA
For parallel arm installations where the door top rail height is insufficient for direct mounting.



4000-18TJ
For top jamb installations where the door frame header height is insufficient for direct mounting.



SNB1420
Sex nut & thru-bolt kit (4) for doors 1¾" (44.5 mm) thick.

