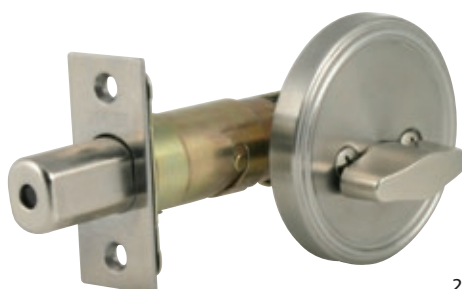


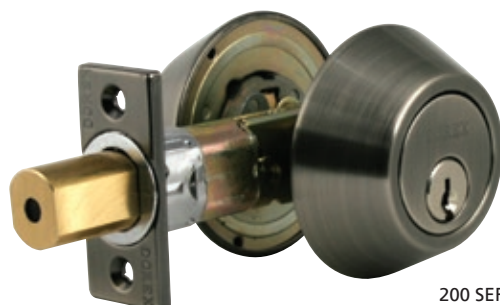
200 SERIES



200 SERIES
SINGLE CYLINDER



200 SERIES
THUMB-TURN ONLY



200 SERIES
DOUBLE CYLINDER

SPECIFICATIONS

- Certifications**
- Conforms to ANSI/BHMA Grade 3
 - 20 minute fire-rating available with listed fire-can*
 - 25 Year limited mechanical warranty
 - 5 Year limited finish warranty

- Door Thickness**
- 1 $\frac{3}{8}$ – 1 $\frac{3}{4}$ " (35–44.5 mm)
 - 2 $\frac{1}{4}$ " (57 mm) extension kit available (#TLA85052)

- Handing**
- Non handed

- Backset**
- 2 $\frac{3}{8}$ – 2 $\frac{3}{4}$ " (60–70 mm), adjustable

- Deadbolt**
- Solid brass or steel with hardened steel security pin
 - 1" (25.4 mm) throw

- Faceplate**
- Mortise type (M); square corner; convertible to drive-in
 - 1 x 2 $\frac{1}{4}$ " (25.4 x 57 mm)

Other options available

- Strike**
- Security strike
 - 1 $\frac{1}{8}$ x 2 $\frac{3}{4}$ " (28 x 70 mm)

- Chassis**
- Round inside thumb-turn with matching exterior
 - Rotating exterior cylinder collar
 - Exposed mounting screws

- Preparation**
- Cross bore: 2 $\frac{1}{8}$ " (54 mm)
 - Edge bore: 1" (25.4 mm)

- Cylinder**
- Keyed functions include 5-pin (drilled 6-pin) brass cylinder in steel housing
 - Removable, rekeyable
 - 2 keys

- Function**
- 51 Single cylinder with thumb-turn
 - 55 One-side, thumb-turn only
 - 57 Thumb-turn with exterior plate
 - 60 Double cylinder

Finish See Selection Guide.

201	51	C15	KD	M
SERIES ¹	FUNCTION	FINISH	KEYING ²	LATCH
(1) 200: NO KEYWAY 201: WEISER 202: SCHLAGE KEYWAY USE 200 WHEN ORDERING FUNCTIONS 55 OR 57 (2) KA: KEYED ALIKE KD: KEYED DIFFERENT				

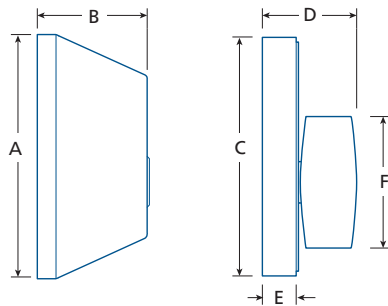


(*) Fire-can must be ordered in conjunction with lockset, not available separately. For fire labelled wood doors ONLY.

Full keying services available – please contact for details

SELECTION GUIDE

	C10B OIL RUB. BRONZE	C11P ANTIQUE BRONZE	C15 SATIN NICKEL	C15A ANTIQUE NICKEL	C19 MATTE BLACK	C26 POLISHED CHROME	C26D SATIN CHROME	C32D SATIN S.STEEL	C3 POLISHED BRASS	C4 SATIN BRASS	C5 ANTIQUE BRASS	C53 ANT. / POL. BRASS	V3* POLISHED BRASS	/CASE
200 SERIES	■	■	■	■	■	■	■	■	■	■	■	■	■	24
OTHER FINISHES AVAILABLE, MINIMUM ORDER QUANTITIES AND/OR ADDITIONAL DELIVERY TIMES MAY BE REQUIRED – PLEASE CONTACT (*) LIFETIME FINISH WARRANTY														



	A	B	C	D	E	F
200 SERIES	Ø 2 $\frac{9}{16}$ (65)	1 $\frac{1}{8}$ (29)	Ø 2 $\frac{1}{2}$ (63)	1 (25.4)	$\frac{3}{8}$ (9)	1 $\frac{3}{8}$ (35)
IN (MM)						

