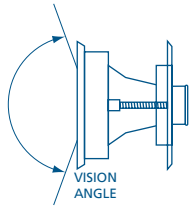
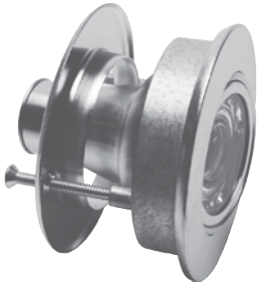


DOOR VIEWERS

SECURITY HARDWARE

REVOLVING DOOR VIEWER

511



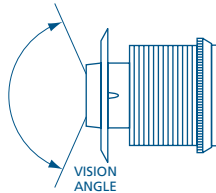
- Revolving door viewer
- Stamped brass components
- Crystal optical glass lenses
- Individually boxed
- 511 KTD Extension kit available for 2" (50.3 mm) thick doors

| MODEL | FINISH | DOOR THICKNESS | Ø BORE | FIRE RATING | VISION ANGLE | /UNIT |
|-------|---------------|--|---|-------------|--------------|-------|
| 511 | C3, C26D, C19 | 1 ³ / ₈ – 1 ³ / ₄ * (35–44) | 2 ³ / ₈ (60.3) | — | 140° | 1 |

IN (MM) *UP TO 2" (50.3 MM) WITH EXTENSION KIT

REFLEX DOOR VIEWER

DS1000, DS2000



- Reflex door viewer with 2" (50.3 mm) screen
- Warnock Hersey listed for 20 minutes fire rated location when used with firestop sealant (not supplied) on a wood composite fire door
- Precision optics, no image distortion, clear viewing up to 7 feet away
- Individually carded

| MODEL | FINISH | MATERIAL | DOOR THICKNESS | Ø BORE | FIRE RATING | VISION ANGLE | /UNIT |
|--------|------------|-------------|---|---|-------------|--------------|-------|
| DS1000 | BL, BR, GR | ABS plastic | 1 ³ / ₈ –2 (35–51) | 2 ³ / ₈ (60.3) | 20 min | 132° | 1 |
| DS2000 | SL, BL | Aluminum | | | | | |

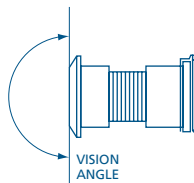
IN (MM)

DOOR VIEWER – LARGE

DS300



DS300CHR-COVER



- Zinc die cast door viewer
- Polished glass optical lens
- Viewer is intended for use with classified fire door rated up to and including 90 minutes
- Detachable lens cover is included
- Individually boxed
- Replacement lens cover: #DS300CHR-COVER

| MODEL | FINISH | DOOR THICKNESS | Ø BORE | FIRE RATING | VISION ANGLE | /BOX |
|-------|---------|---|--|-------------|--------------|------|
| DS300 | BP, CHR | 1 ³ / ₈ –2 (35–51) | 3 ¹ / ₃₂ (24.5) | 90 min | 180° | 15 |

IN (MM)

