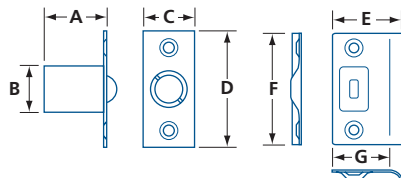


DOOR CATCHES & LATCHES

GENERAL HARDWARE

BALL CATCH

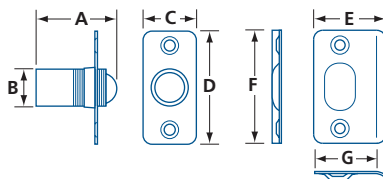
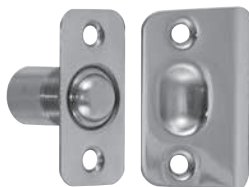


- For wood door and frame
- Adjustable for door gap
- Strike included for $1\frac{3}{8}$ " (35 mm) thick door
- Mounting hardware included: wood screws

MODEL	FINISH	MATERIAL	A	øB	C	D	E	F	G	/BOX
01013	C3, C5, C15A, C26, C26D	Steel	$1\frac{3}{16}$ (30.1)	$\frac{27}{32}$ (21.5)	1 (25.4)	$2\frac{1}{4}$ (57)	$1\frac{7}{16}$ (36.5)	$2\frac{1}{8}$ (54)	$1\frac{3}{16}$ (30)	50

IN (MM)

BALL CATCH – BRASS

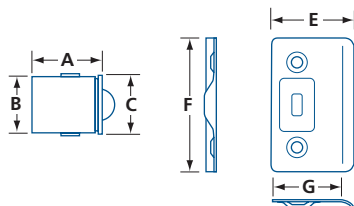
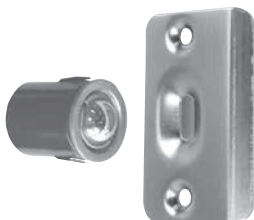


- For wood door and frame
- Adjustable spring tension
- Adjustable for frame gap
- Strike for $1\frac{3}{8}$ " (35 mm) doors; $\frac{7}{32}$ " (5 mm) rounded corners
- Mounting hardware included: wood screws

MODEL	FINISH	MATERIAL	A	øB	C	D	E	F	G	/BOX
01014	C3, C10B, C15, C15A, C19, C26D	Brass	$1\frac{1}{2}$ (38,8)	$1\frac{1}{16}$ (17,8)	1 (25.4)	$2\frac{1}{8}$ (54)	$1\frac{3}{8}$ (35,4)	$2\frac{1}{8}$ (54)	$1\frac{3}{16}$ (30)	20

IN (MM)

BALL CATCH – DRIVE IN



- For wood door and frame
- Zinc die-cast body, with steel ball and strike
- Fits into 1" (25.4mm) bore
- Adjustable for frame gap
- Strike for $1\frac{3}{8}$ " (35 mm) doors; $\frac{7}{32}$ " (5 mm) rounded corners
- Mounting hardware included: wood screws

MODEL	FINISH	MATERIAL	A	øB	øC	E	F	G	/BOX
01003	C10B, C11P, C15 C19, C26, C26D	Zinc die-cast	$1\frac{3}{16}$ (30.1)	$\frac{31}{32}$ (24.6)	1 (25.4)	$1\frac{3}{8}$ (34.9)	$2\frac{1}{4}$ (57)	$1\frac{3}{16}$ (30)	50

IN (MM)

